



SUPER MoRRI

# Introduction

Brazilian National System of  
Research and Graduate Education

# Building and shaping the SNPG

Key moments in the system's conception

**1950s**

Graduate education becomes the object of Public Policy



**1970s**

CAPES is in charge of the national policy for graduate education. Evaluation begins.

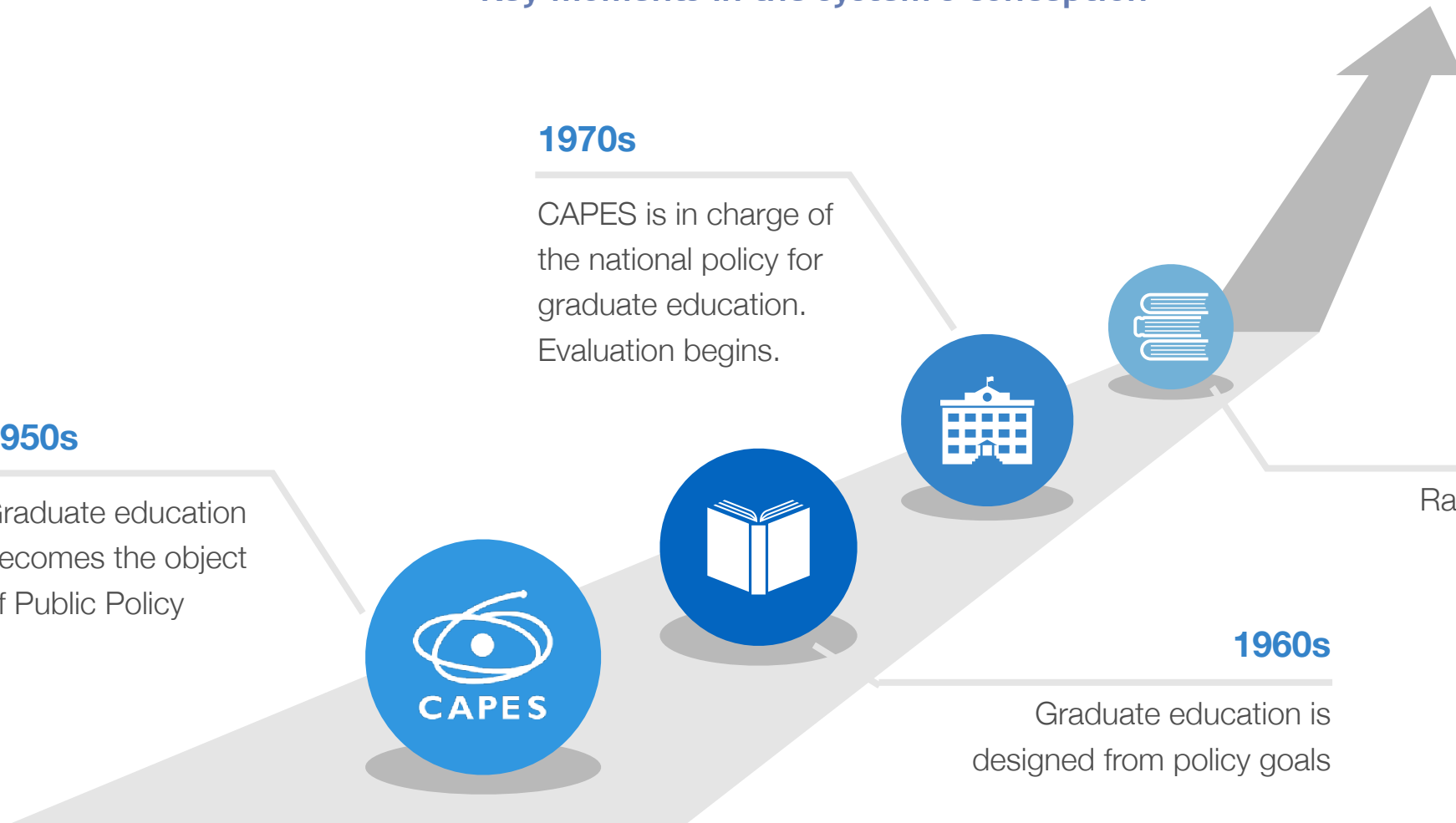


**1960s**

Graduate education is designed from policy goals

**1980s and 1990s**

Rankings become public. Evaluation evolves.





# Fundamentals of Evaluation



To establish a quality standard for the master's and PhD Programs



Accreditation process based on the quality and reliability that comes from peer review



Criteria are periodically established by the academic community



Evaluation as a base to identify needs, prioritise grants, guide and influence the development of graduate system

# Evaluation of the Graduate Programs

## Modalities of Evaluation

### ENTRANCE

Evaluation of  
proposals for new  
courses

### PERMANENCE

Quadrennial  
Evaluation of  
Graduate Programs



# EVALUATION IN NUMBERS



4,175 programs evaluated  
in 49 evaluation fields

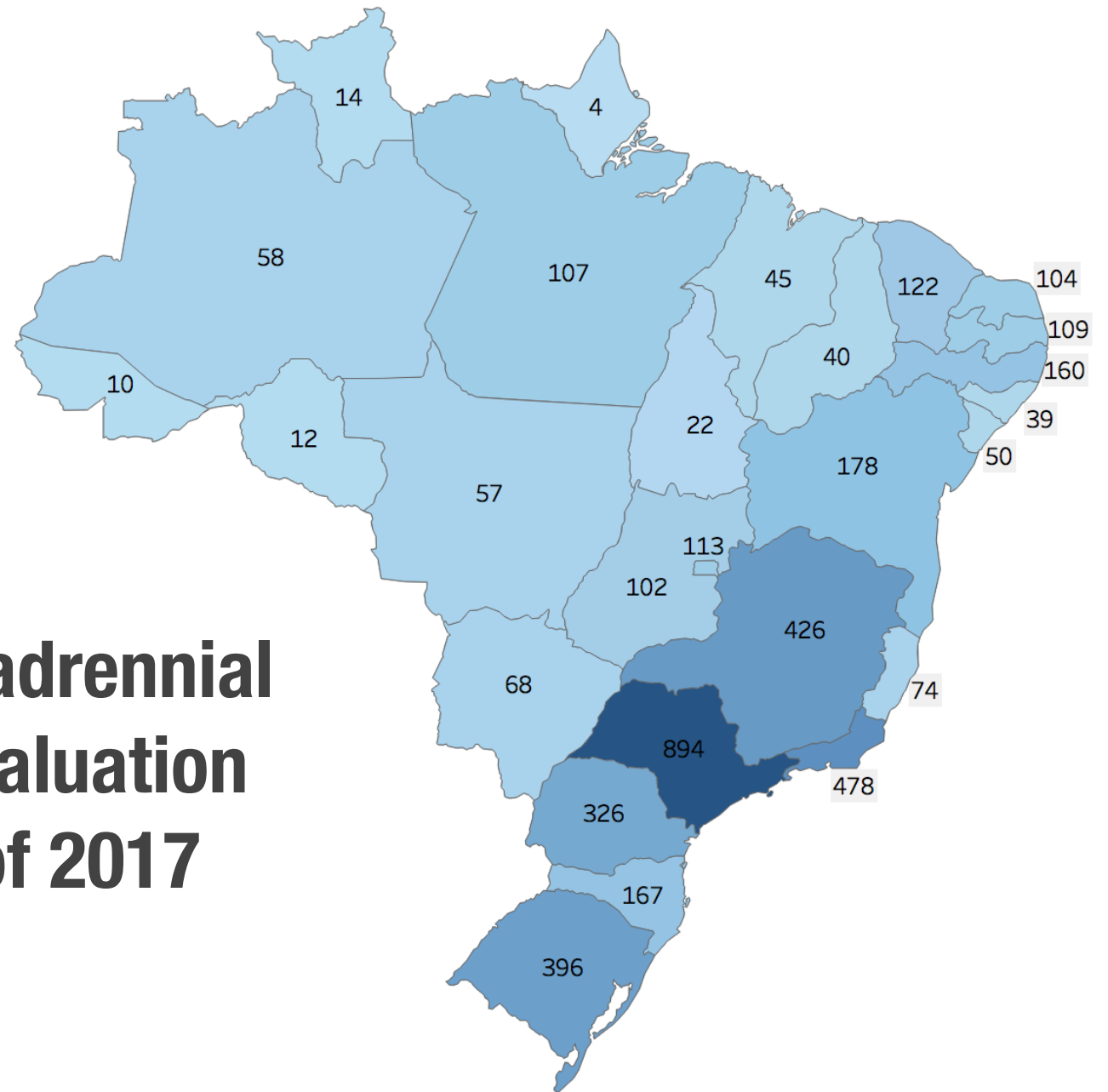


Around 60,000 professors  
and researchers, and over  
300,000 alumni in the  
evaluation period



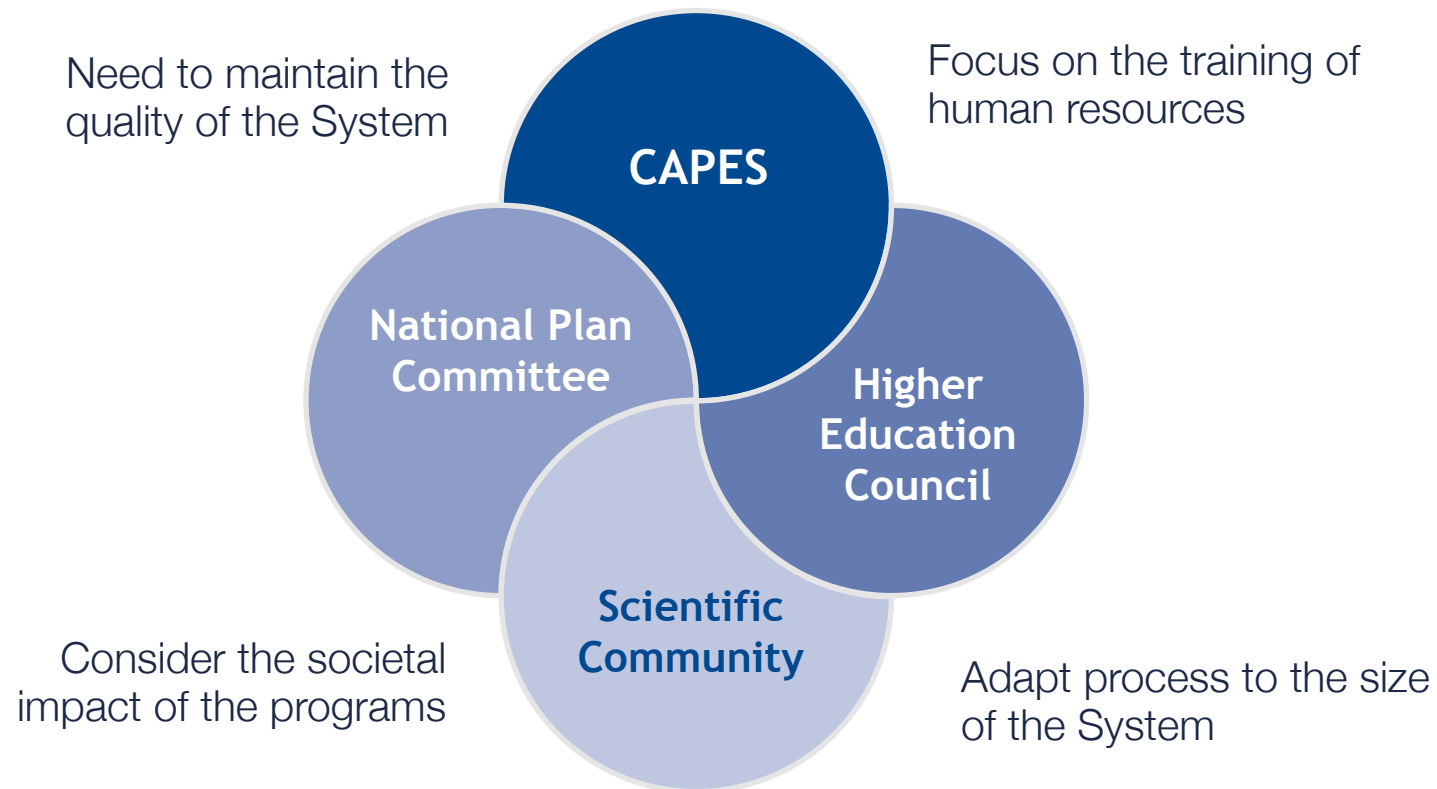
4 years of data to assess the  
performance of the courses

## Quadrennial Evaluation of 2017



# Review of the evaluation model

Continuous evolution is part of the evaluation process



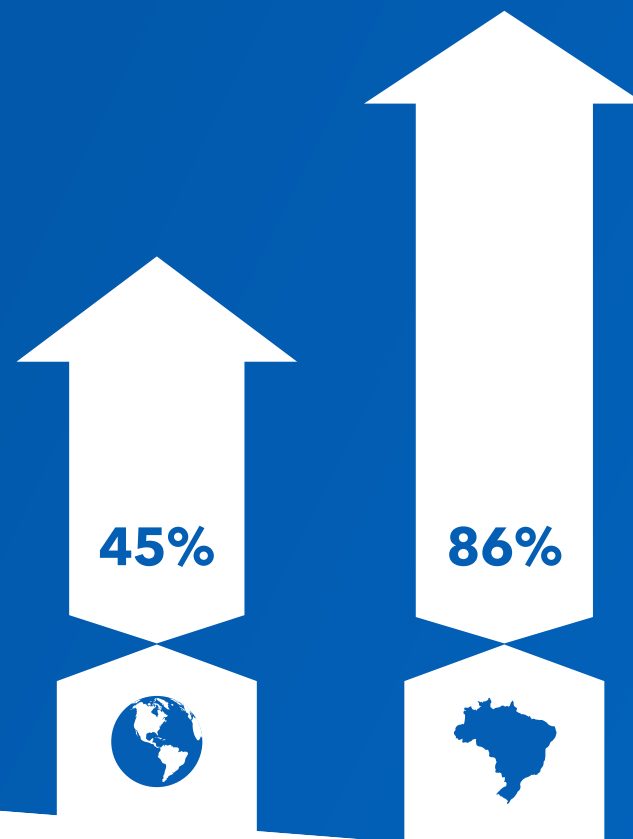


SUPER MoRRI

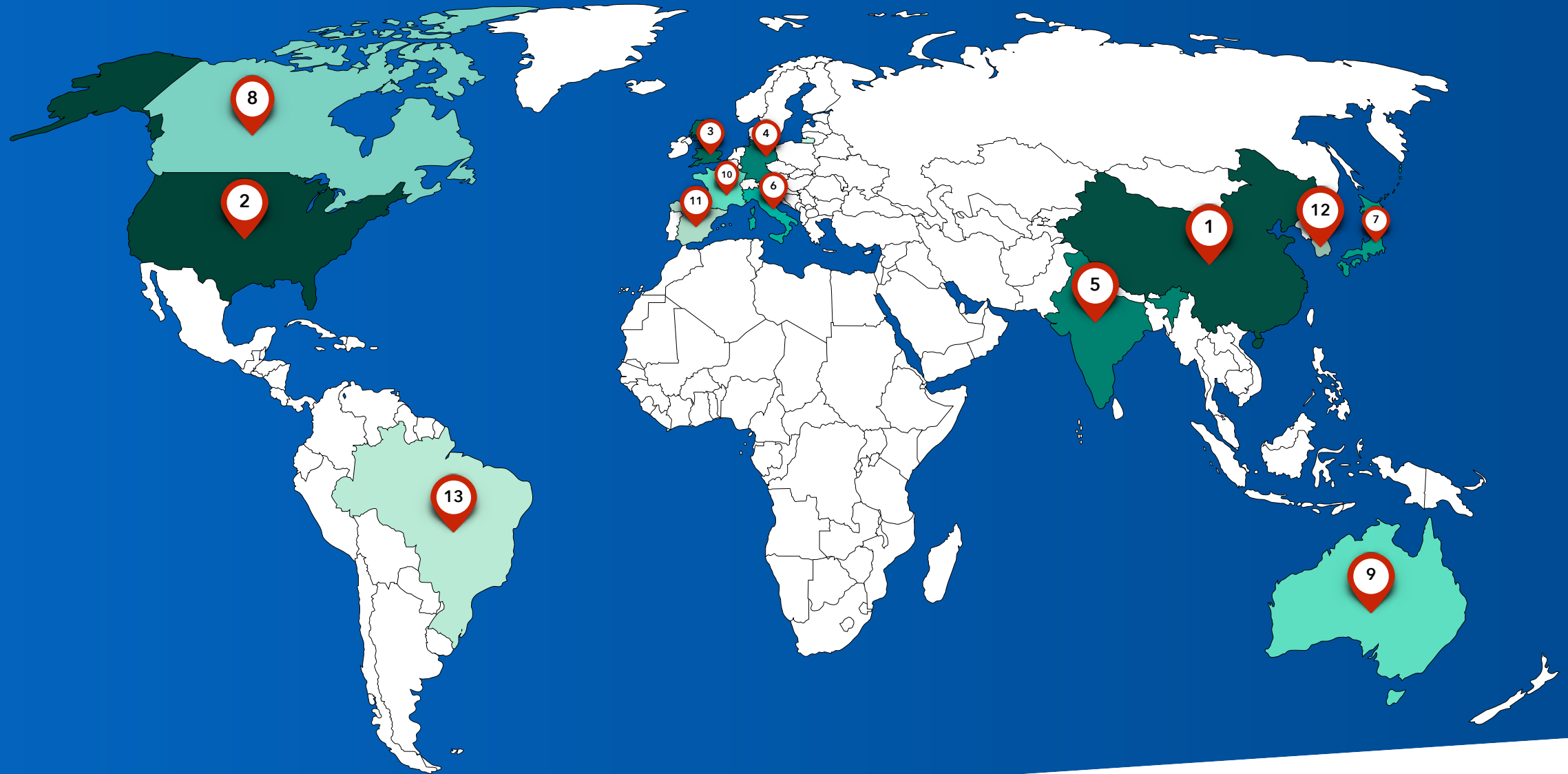
# Qualis Journals

Being responsible even in one of the most traditional aspects of research assessment

## Growth of Scientific Production (2010 to 2020)



# World's Scientific Production in 2020







**Journals**



**Books**



**Technical / Technological**



**Artistic**



**Events**



“

*The assessment model should also induce internationalisation in the publication of articles and in the indexing of journals.*

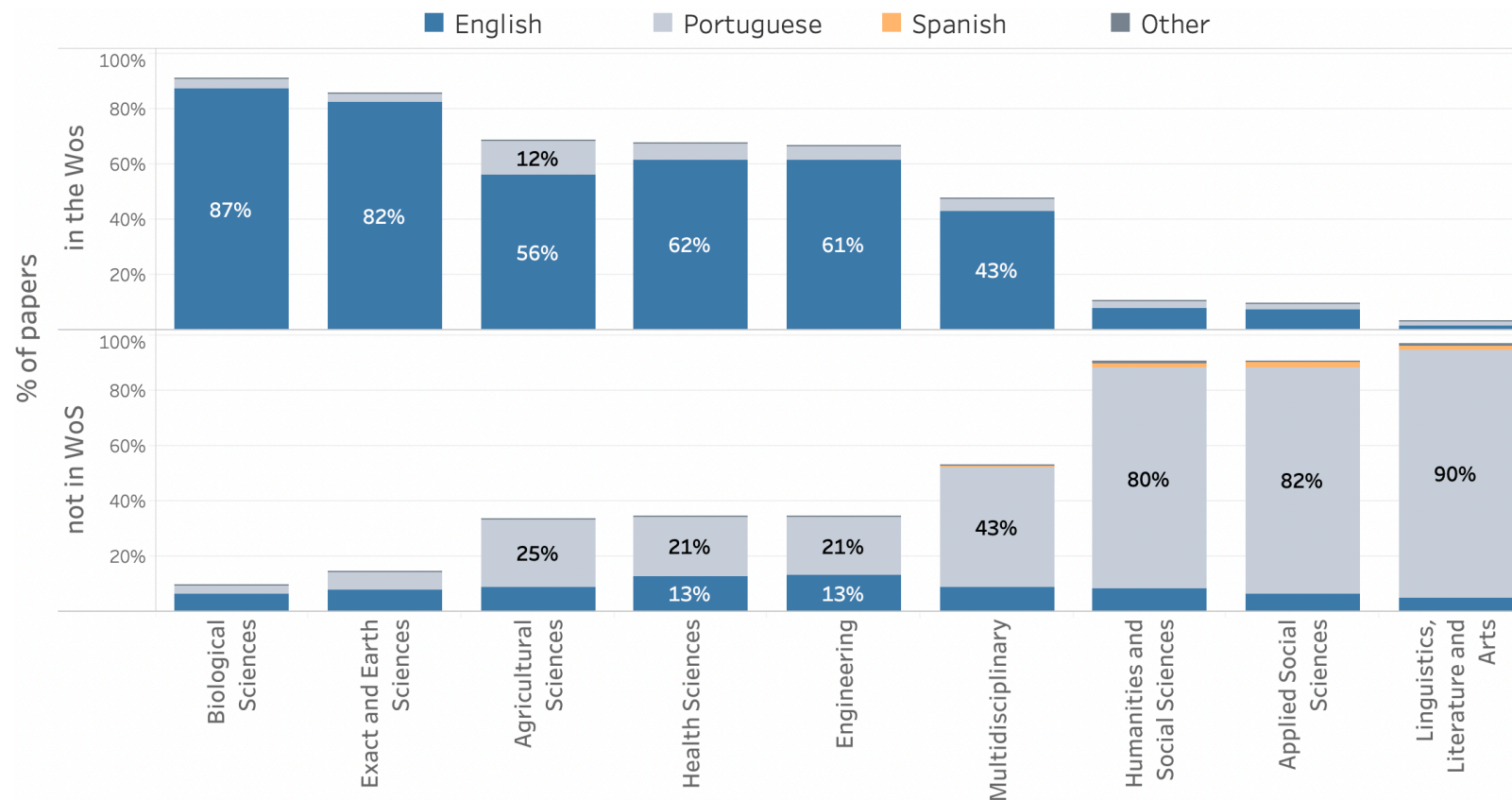
*— Proposal from Qualis WG*

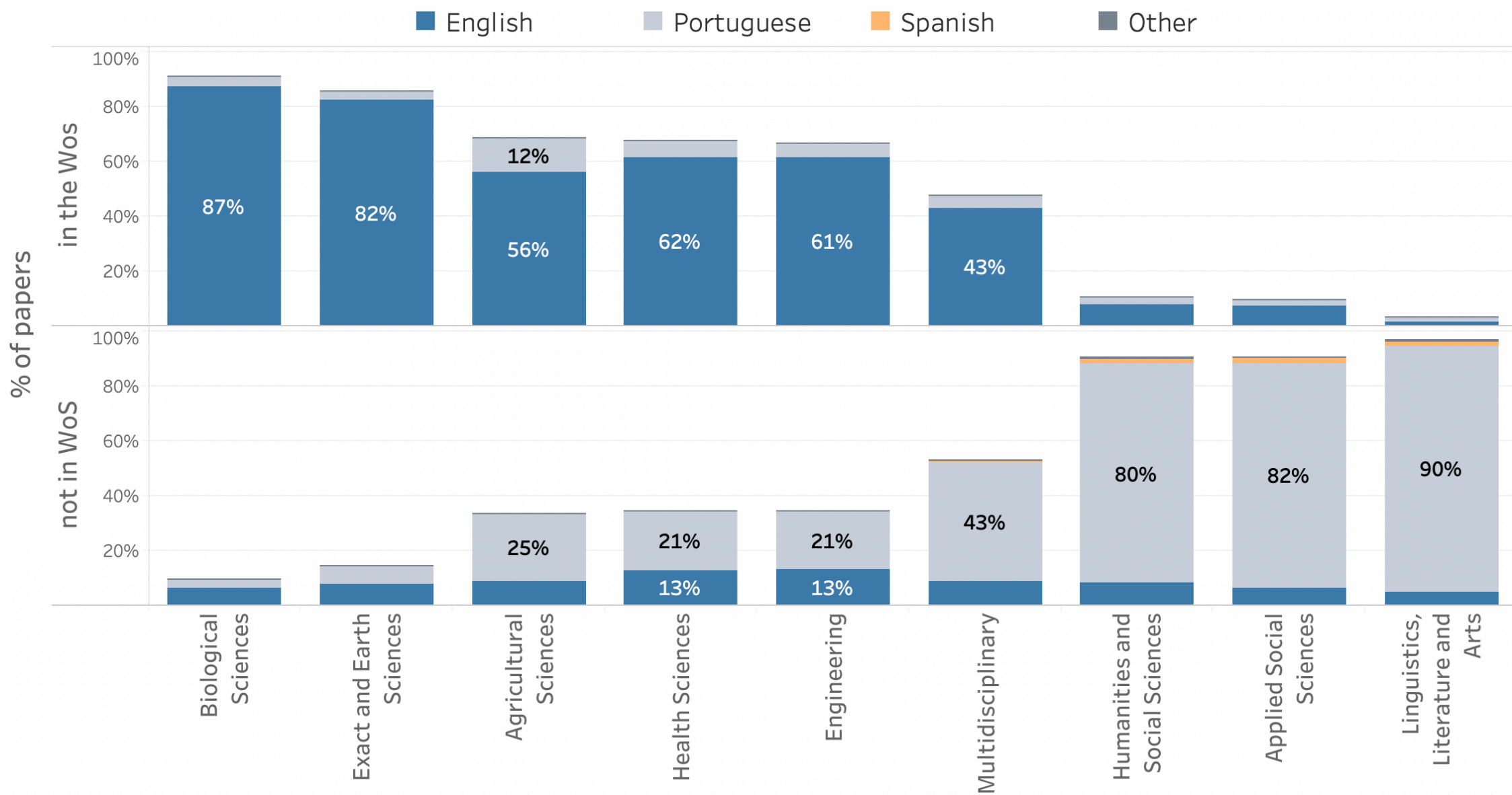




# Brazilian output of journal articles

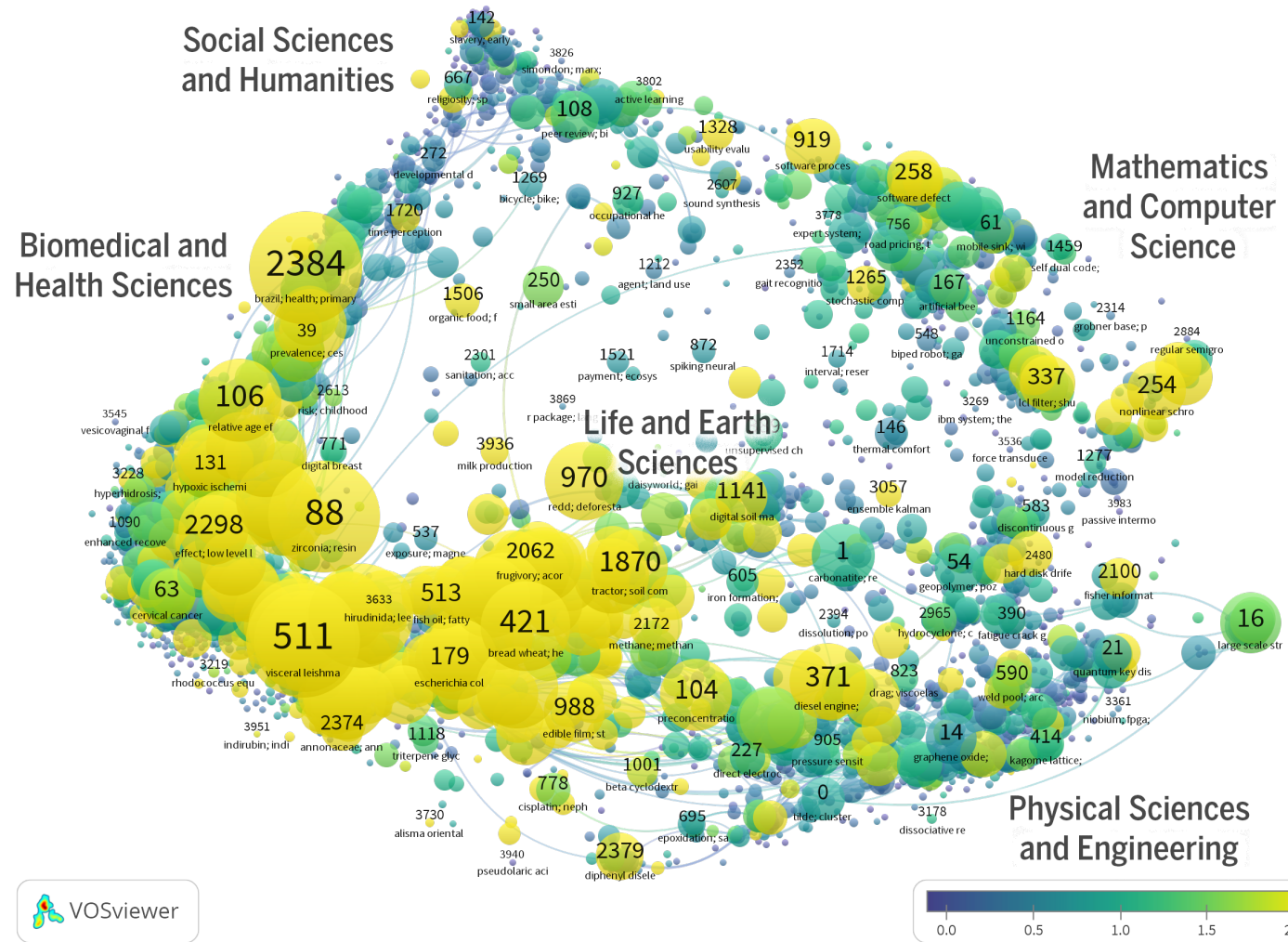
Data from 2013 to 2018, according to WoS indexing and language











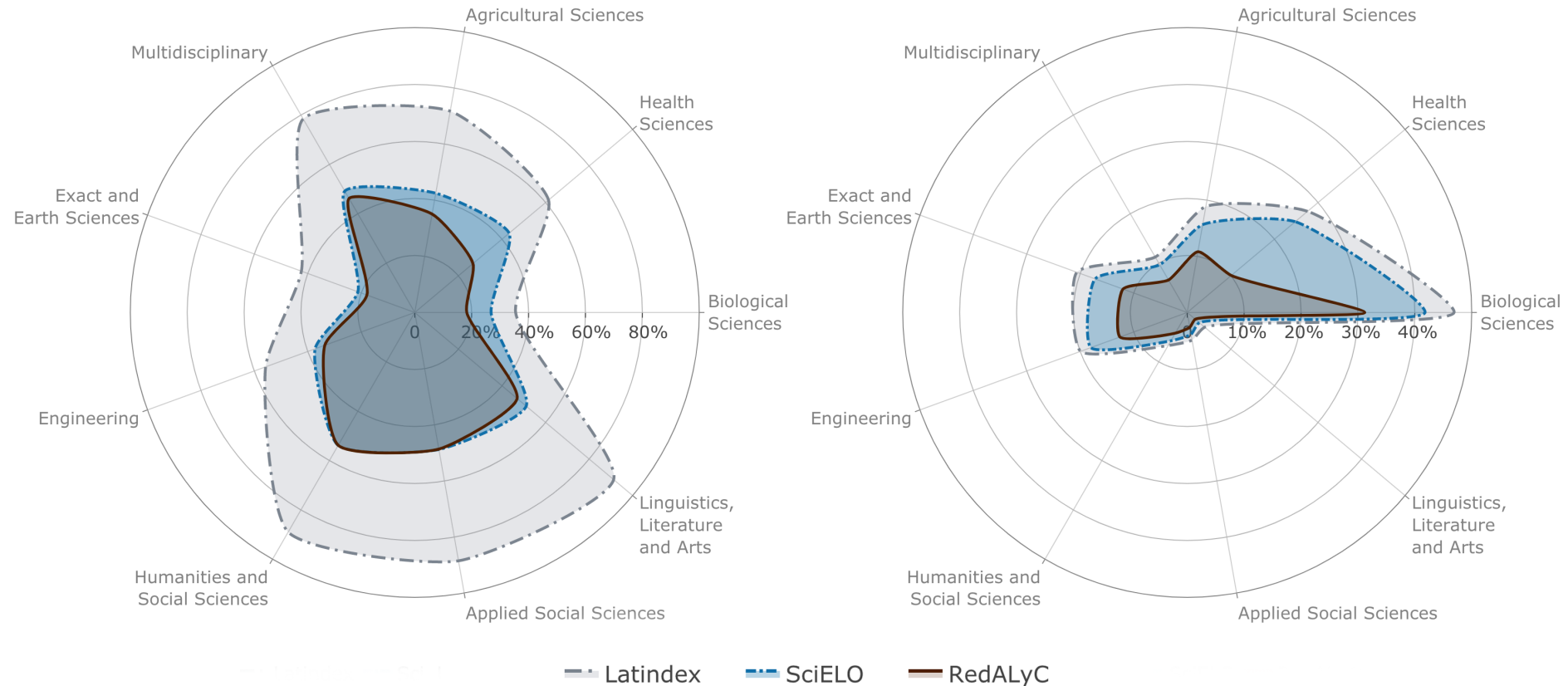






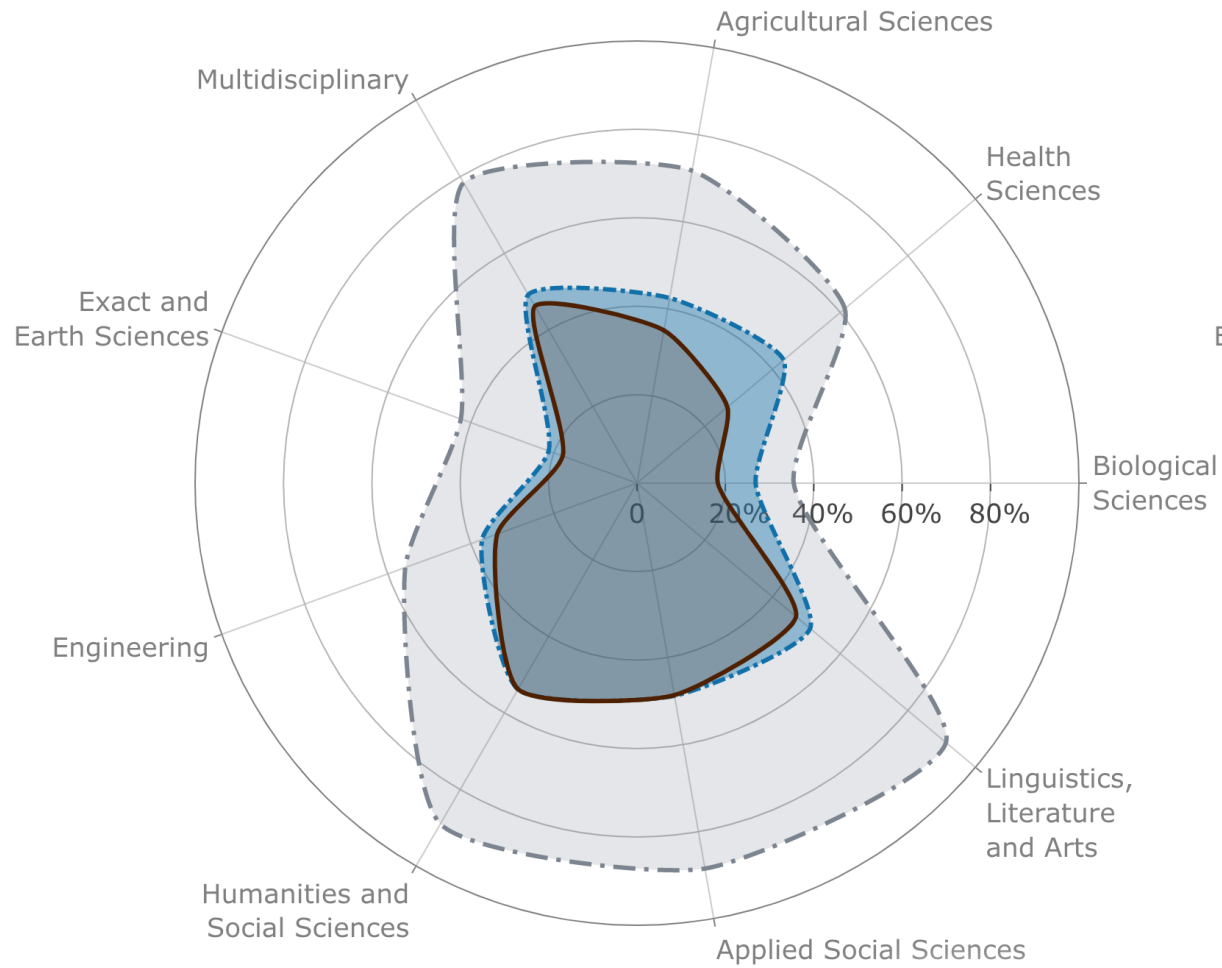
# Regionally relevant databases

Where are the papers not indexed by the Web of Science?

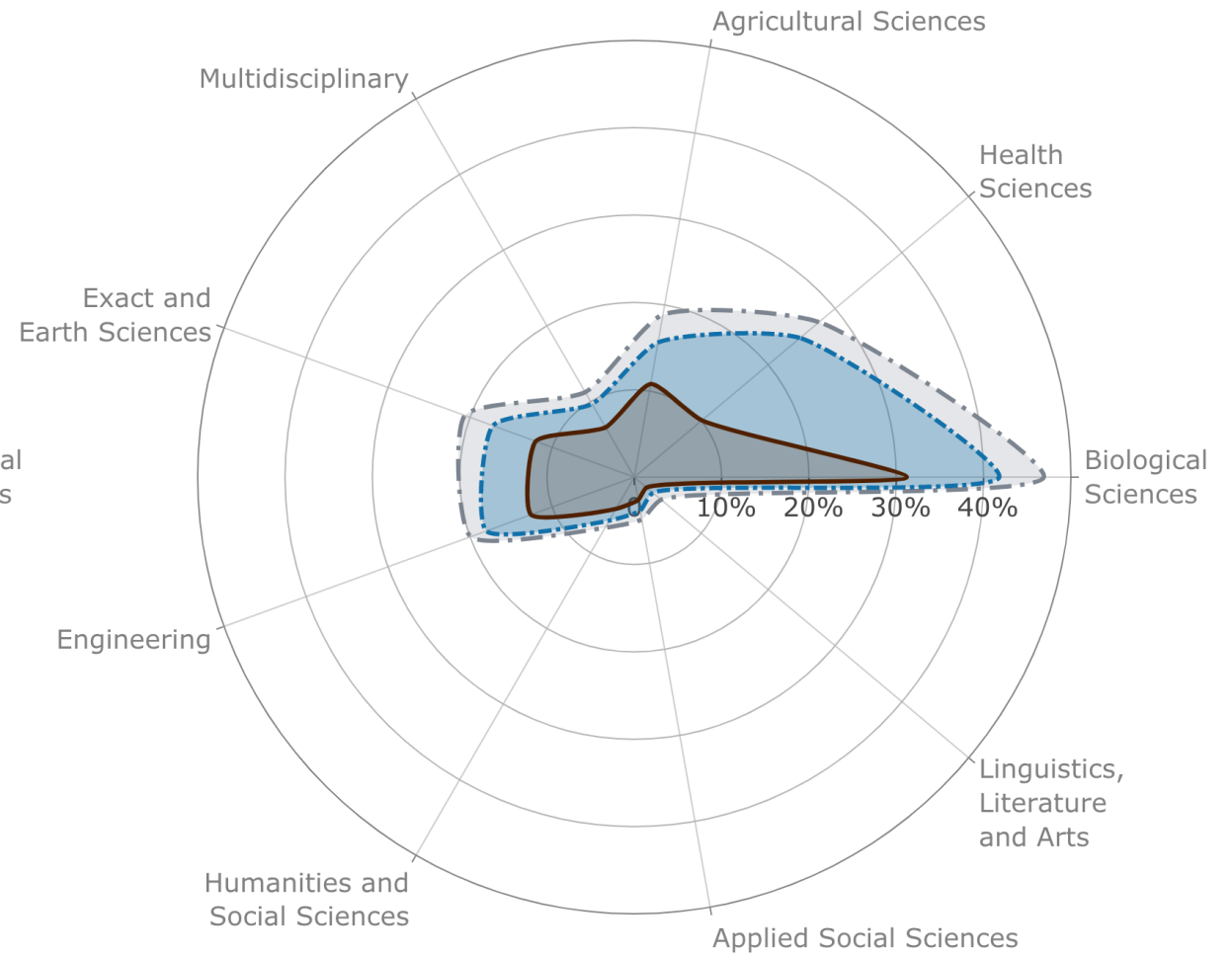




## Non-English



## English



Latindex SciELO RedALyC



SUPER MoRRI

André Brasil



[a.l.brasil@cwts.leidenuniv.nl](mailto:a.l.brasil@cwts.leidenuniv.nl)



<http://www.andrebrasil.net>



[@andrebrasilbsb](https://twitter.com/andrebrasilbsb)



*How can we value regionally relevant research, considering a traditional sort of output? Are language and regional databases important issues to consider?*



<http://bit.ly/2Z6KqJp>